

# DREAM WORLD

RESIDENCY

your dreams come true





# amenities

## Development Features

- "Twin" residential towers.
- Good location on 200 feet road.
- Sophisticated contemporary design of angles quality and sculptured with maximized views from all units.
- Extensive fragile landscaped gardens and other features.
- Near by about 1700 meter from City Light main circle.

## Life Style And Re-creation

- Professionally designed and executed landscaping.
- space for exercise and Yoga.

## Children Park

- Swing.
- Merry-go-round.
- See saw.
- Sliding.

## Outdoor Amenities

- Garden.
- Jogging Track.
- Volley ball/Basket ball court.

## Indoor Amenities

- Table-tennis Court.
- Yoga room.
- Exercise room.
- Carom board room.
- Toy Zone.

## General Facilities

- Gorgeous double heighten entrance foyer in each building with fluffy interior.
- Allotted two car parking and 2- wheeler parking for each flat.
- Hygienically designed centralized garbage collection never before provided in Surat.
- Structural designed as per earthquake standards.

## Generator

- Gas generator for Emergency lighting in all common amenities and four electric points in each flat.

## Safety and securities features

- Security cabin on main entrance gate.
- Audio-Video recording facilities in entrance of the campus as well as foyer of the each building.
- Audio intercom system

## Standard Apartment Features

- Every flat with personally controlled A.C. in one bed room.
- Spacious area planning with 3 sides open flats for good light and ventilation..

## Flooring

- Premium quality granamite tiles flooring in living, dining, kitchen and all bed rooms. Non-skid tiles in bath rooms and wash.

## Kitchen

- Polished granite kitchen platform with composite quartz material sink and drain board.
- Good quality tiles dado up to lintel level.
- Gujarat Gas pipeline connection.

## Toilets / Plumbing

- Designed tiles flooring and dado up to lintel level.
- Orrissa W.C. pan in common toilet.
- European type W.C. pan in all attached toilets.
- Wash Basin and C.P. fittings of standard company in all bath rooms and toilets.
- Plumbing for centrally Gas Geysers.

## Door

- Decorative main door and internal Teak wood frame with water proof shutter with all C.P. fitting

## Window

- Powder coated aluminum section windows with MS safety grill.

## Electrification

- Concealed conduits with copper wire and suitable points and modular switches of ISI standard.

## Wall Finish

- **Internal walls:** Putty in all plastered wall and ceilings.
- **External Wall:** Weather sealed colour of standard company and paint in common area.

## Lobby and Staircase

- Main entrance lobby decorated in combination of granite and paint.
- Each lift landing well finished in stones or good quality tiles.

## Lift

- Two standard auto lifts of six passengers Water Supply
- Under ground and over head storage tanks of suitable capacity.
- Bore well as an auxiliary of water supply.

## Note

- The Architect and Developers shall have full authority for alteration, modification and development in design or specifications this shall be binding to all members.
- This brochure is for private circulation only and by no means it is a part of any legal contract.
- Flat owners shall bear all the changes of stamp duty legal documents, service tax, society maintenance, SMC taxes & connection charges for GEB, water supply & drainage.
- Any changes in rules & regulations of SMC/SUDA shall be binding to all flat owners.



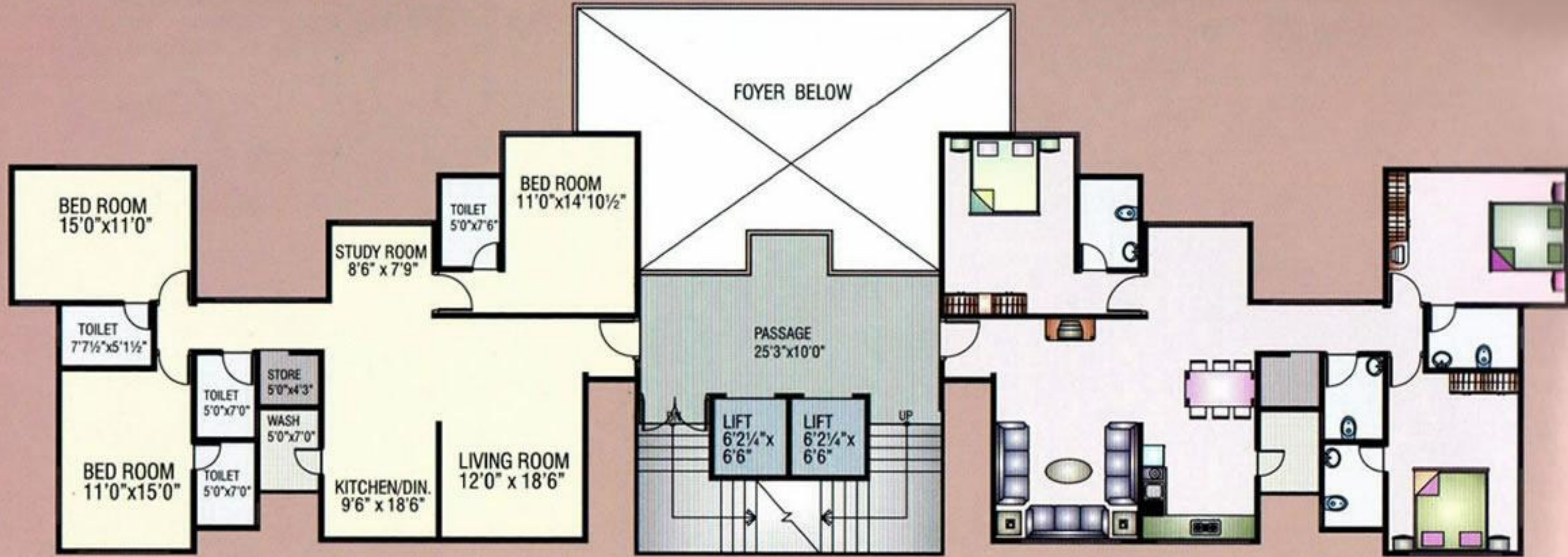
# Layout Plan



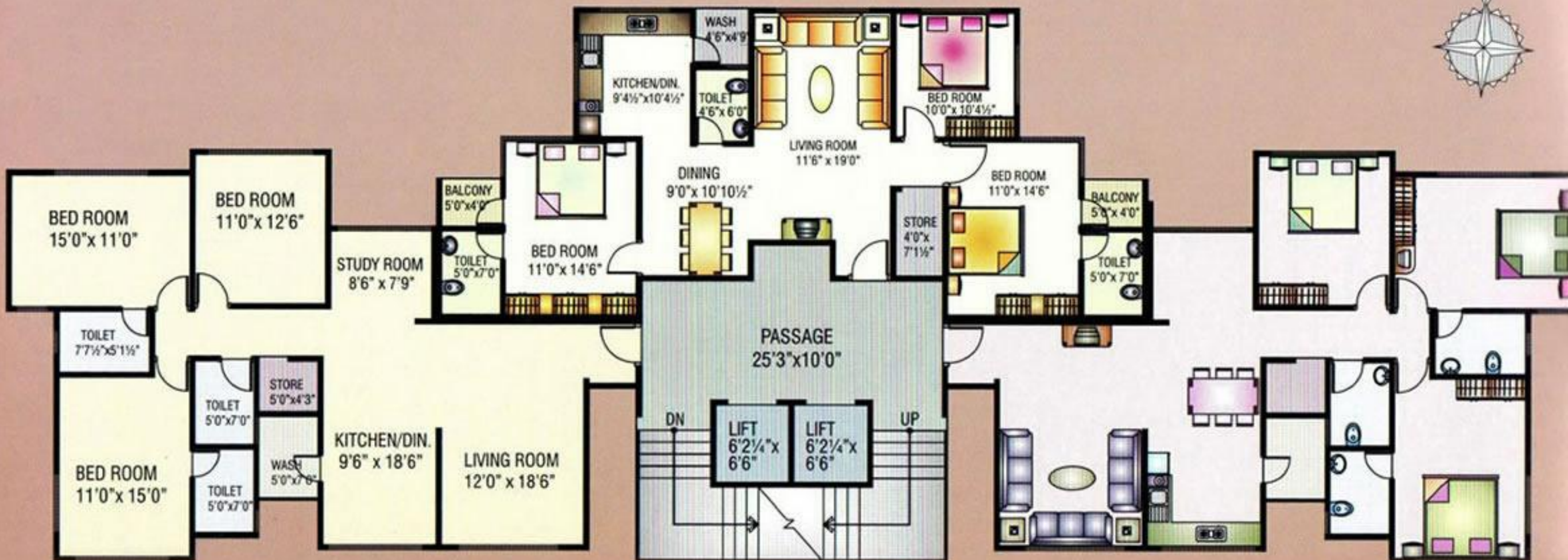


# Building - A

## FIRST FLOOR PLAN



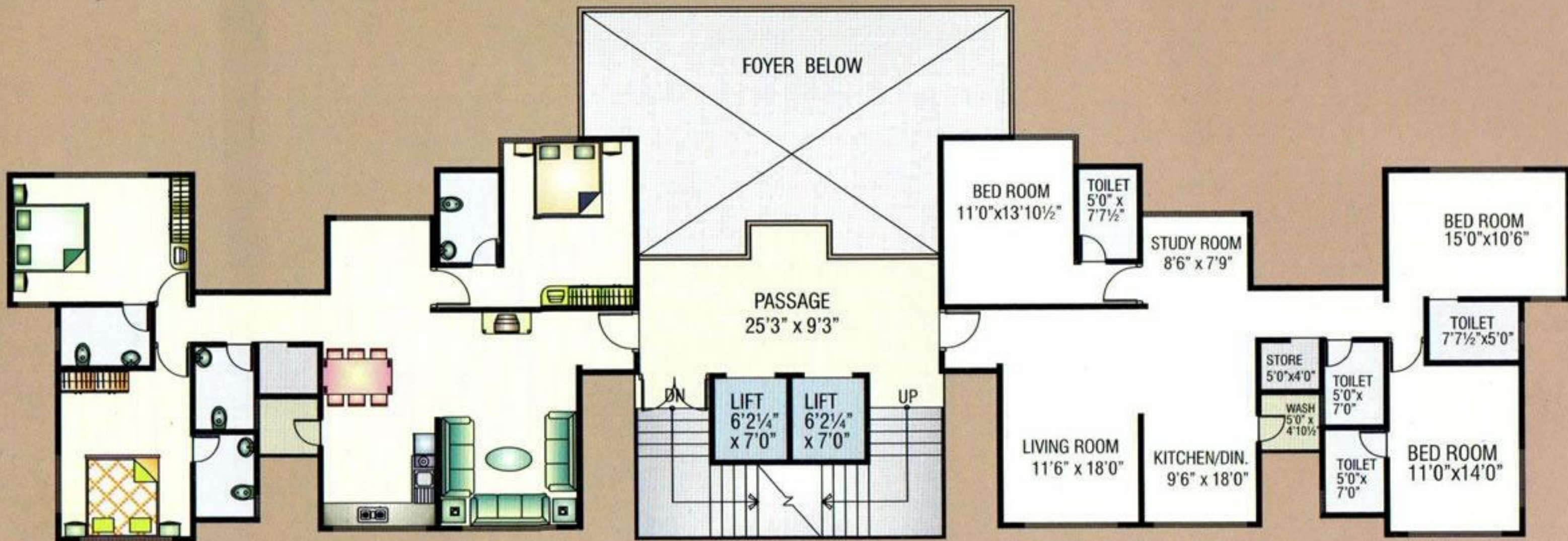
## TYPICAL 2nd TO 10th FLOOR PLAN





# Building - B

## FIRST FLOOR PLAN

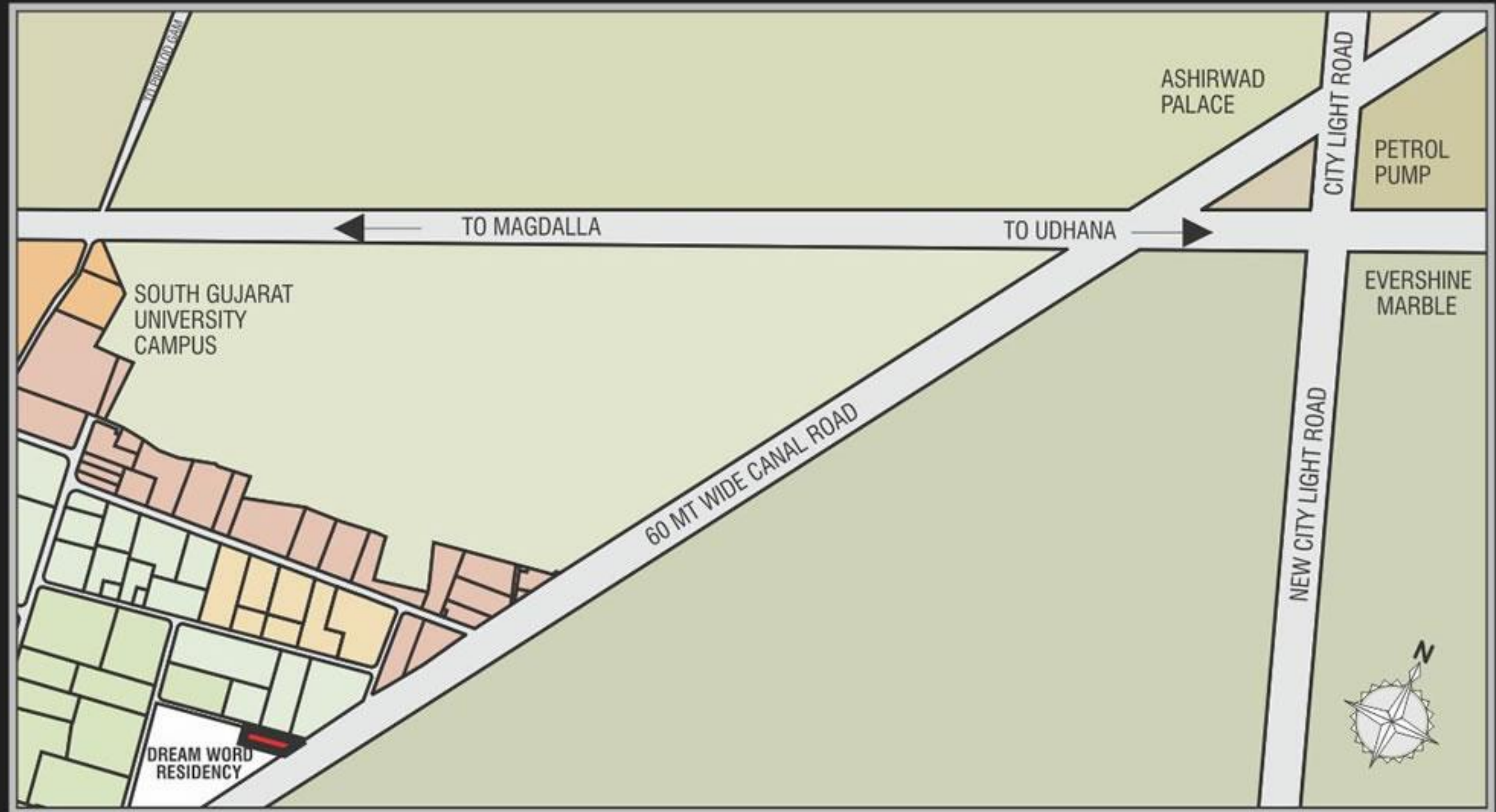


## TYPICAL 2nd TO 10th FLOOR PLAN





# key plan



## ORGANIZER

**RAVANI**  
DEVELOPERS

## ARCHITECTS

**RAGHAV**  
CONSULTANTS  
ARCHITECTS

## STRUCTURAL CONSULTANTS

**BHAGAT**  
**ASSOCIATES**  
DHARAM BHAGAT  
(M.E. STRUCTURE)

## SITE ADDRESS

### ***DREAM WORLD***

Nr. L. P. Savani Academy,  
OFF CITY LIGHTCROSS ROAD,  
Canal Road, VESU, SURAT